

share!



Have you got something to Share? Email us at: share@grace-eyre.org

WHAT IS SHARE?

Share! is a magazine for people with learning disabilities. It tells you what's going on and how to meet and make new friends. We're helping each other out and we hope you enjoy reading Share! If you've got something to share or would like a different version of this news letter please contact us by email on: share@grace-eyre.org



My name is **Jon Schachter** and I am a B.A. graduate in English & Sociology from the University of

Alberta. I grew up in Edmonton, Alberta, Canada and I like Modern Jazz (especially John Coltrane) and I have always been interested and like foreign languages, history and culture.

MEET THE SHARE! TEAM



My name is **Faye Cooper**, I am a sub editor for **Share!** magazine. I am 22 years old and I enjoy socialising with friends, going to the cinema and I am a member of Brighton Cougars basketball team.



Hi! My name is **Steven Osborne**, I live in a CMG shared house with other tenants.

I'm happy to be a news editor for **Share!** I like football, going out and having fun and spending time with my friends.

SHARE! ISSUE 2

The next issue of **Share!** will be available in October 2010.



PADDLE ROUND THE PIER

By **Steven Osborne**

Once a year people paddle around the pier for charity. Some people make their own rafts. This year I went on the Sunday 4th July. It was sunny weather and really fun. The best bit was the mountain bikes doing tricks on ramps. There was loads on sale like skateboards and loads of different food. Everyone should go next year.





TRAVEL BUDDY SCHEME

By Sarah Howse, Lara Hicks, Becky Ellis (top row), Tony Miller, Terry Vine, Tina Jenner and Natalie Connor (bottom row)

We met bus instructors and bus drivers to tell them about the **Travel Buddy Scheme** and how we are running it with the travel training courses. They were very impressed and two of the instructors are involved with people with learning disabilities (foster families), so they were very interested in what we aim to achieve.

However no one from the bus depot knew about the **orange wallets!** They thought it was a great idea. We gave them a spare wallet which they will take a picture of and put in their news letter for other drivers to read and put into their training.

We had fun doing a role-play on a bus and were taken around Brighton. Everyone was quite nervous to start with but we all

had lots of questions to ask afterwards. We were given pens, coasters and rubbers as gifts to take back to Grace Eyre.

Everyone had a really good day and learned a lot about travelling on buses. It made everyone feel more confident using Brighton & Hove buses. It also helped the bus company understand the needs of adults with learning disabilities

We are hoping to visit the bus company again as part of the training for the Grace Eyre Travel Buddy Scheme.

If you would like to find out more about it please email Sarah Howse at: showse@grace-eyre.org or Nicola Mayne at: nmayne@grace-eyre.org

DURING THE BUS RIDE WE LEARNED ABOUT:

- Pressing the STOP button
- Saying "THANK YOU" when getting off the bus
- Having our bus pass READY when getting on the bus and taking our ticket
- Asking the driver if he/she can WAIT until we sit down before driving away from the stop

MILE OAK FARM

By Mabel Ardener, Rosemary Bradford, Tracey Compton, Peter Cutts and Betty Vincent

We saw peacocks, rabbits, donkeys, ducks, goats and guinea fowl. There is a shop that sells refreshments, postcards and animal food. They sell chicken feed for 30p so the group bought some and fed the birds.

There is hand gel to clean your hands after touching the animals. We had drinks at the picnic tables next to the donkey.



Peter: "The best bit was feeding the animals."

Mabel: "I like it all."

Rosemary: "I liked the rabbits."

Betty: "I liked feeding the birds."

Tracey: "I loved the donkey."

Everyone said they wanted to go back to the farm.



When is it open?

All year round from 9am-5pm on Monday-Friday and 10am-4pm on Sunday.

Where is it?

✉ Mile Oak Road, Portslade

☎ 01273 424651

💻 www.mileoakfarm.co.uk

What does it cost? Free

Is it accessible and friendly?

Very friendly staff but there's only one toilet which isn't accessible for a wheelchair. There are plans to build a disabled toilet in the future.

PHOTO BY INGRID ASHBERRY



DANCING QUEEN

By Debs Hartin

I went to the Theatre Royal on a Saturday afternoon. I got there early and had a drink. I liked the show. I liked the people dancing on stage, it was great. I liked the singing and the music. Did Abba tunes, I liked the costumes. Energetic! We were dancing. I just got up! I sat near the front of the stage in the stalls. Go in and have a look. You can see the seats you want. The bar lady was nice. She poured the drink for me when I asked her to. It is very

helpful. Long time the show. Just right. Not too busy. Will go again. I want to see My Fair Lady.

When is it open?

There are shows in the afternoon and evening.

Where is it?

✉ New Road, Brighton.

☎ Special Access 08448 717677

How do I buy a ticket?

Go to the theatre box office.

They will show you the seats or you can ring the Special Access line. If you are a group and have never been to the theatre before you can ring the manager and ask for a tour.

What does it cost? £16

Is it accessible and friendly?

It's a nice venue. The people are nice and really friendly. They talked to me and helped me find a seat. Went in the car. Parked it outside the theatre then put it in the car park. People in wheelchairs go in the stalls. There is no lift.

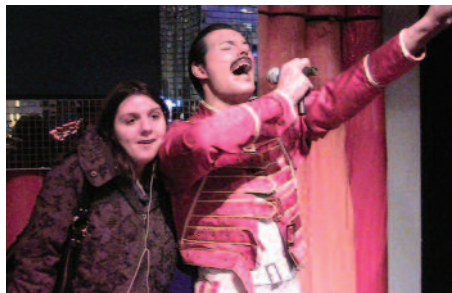
MADAM TUSSAUDS

By Faye Cooper

Madam Tussauds is a wax work museum in London. I enjoyed taking photos of famous wax models. My favourite wax models were; Michael Jackson, David and Victoria Beckham, Beyonce and Britany Spears. Weekends can get very busy so visiting the museum during the week may be a better time to go.

When is it open?

Off peak: 9.30am-7pm,
last admission 5.30pm;



peak 9am-8.30pm,
last admission 6pm.

Where is it?

✉ Marylebone Road, London, NW1 5LR. Two minutes' walk from Baker Street tube station.

☎ 0871 894 3000 (call this number for priority access).

💻 www.madametussauds.com

What does it cost? You can get discounts if you buy tickets in advance from the website.

Is it accessible and friendly?

Wheelchair users should call in advance. The queue to get in can take an hour off peak.

PHOTOS BY KALI POTTS



CAROUSEL EVENT

Live music and film.

When is it?

Saturday 18th September
Midday-5pm.

Where is it?

✉ Jubilee Square,
Jubilee Street, Brighton.

What does it cost?

Free.



BLUE CAMEL CLUB

By Paula Burchell



The Blue Camel is a really nice place. I like the DJ Chris Love. It's really

friendly there. It is moving to the Corn Exchange soon, near the swimming pool. Lots of people go there.

When is the next event?

Monday 4th October, 7pm-10pm

Where is it?

✉ The Corn Exchange,
Church Street, Brighton.

☎ 01273 234 734 (Carousel)

💻 www.carousel.org.uk

What does it cost?

£4, (carers free).

Bring money for drinks.

Is it accessible and friendly?

Yes.



SHUT UP & LISTEN RADIO SHOW

Check the website for details:

💻 www.shutupandlisten.org.uk

GET OUT & ABOUT

SOME PLACES YOU MIGHT LIKE TO VISIT...



THE BOWLPLEX

By Steven Osborne

Bowling is a leisure activity people do for fun. The Bowlplex is big with lots of lanes. It has a pool table room, an arcade, a bar and a restaurant. They have tournaments with lots of different leagues. It's fun and easy and people enjoy it lots.

When is it open?

Everyday, midday until late.

Where is it?

✉ Brighton Marina.

☎ 01273 818180

💻 www.bowlplex.co.uk

What does it cost?

Summer season £5.35 adult, £4.50 under 16, £3 with compass card.

Is it accessible and friendly?

Yes.

Feedback:

Deji Osho: "Wicked!"

James Barnett: "It's fun."

GONE TO THE DOGS!

By John Holder

I go every Thursday night. It's better than being stuck indoors. They have screens that you can watch the dogs on. I have my own card that I take with me. I sit with my mates and put a bet on.

When is it open?

Sunday: 11am-2.30pm

Wednesday: 1pm-6.30pm

Thursday: 6.30pm-10.30pm

Friday: 10.30am-2pm

Saturday: 6.30pm-10.30pm



Where is it?

✉ Nevill Road, Hove.

☎ 01273 204601

What does it cost?

Free Wednesday, Friday and Sunday; £5 Thursday; £6 Saturday. It costs more if you want to put on a bet.

Is it accessible and friendly?

All the people are friendly. There's a lift to the restaurant and the stadium is wheelchair friendly.



DEVIL'S DYKE & THE PUB

By Paula Burchell

I like Devil's Dyke. You can walk about there. I go on the open top bus. You can have meals outside the pub. The pub is really lovely, people are very nice. You have to smoke outside.

When is it open?

Monday-Saturday: midday-11pm

Sunday: midday-10.30pm.

Where is it?

✉ Dyke Road, Poynings.

☎ 01273 857256

What does it cost?

Sandwiches from £4.95.

Lunch from £6.

Is it accessible and friendly?

Yes it is. Call before going if you use a wheelchair and staff can book a table for you.



THE QUEEN'S HEAD

By Hilary Southwood

Very friendly people. We had a drink there. It's a place where people can talk. There are fruit machines there.

It's near to the middle of town and near lots of buses.

When is it open?

Noon until late.

Where is it?

✉ 69, Queens Road, near Brighton train station.

☎ 01273 205 800

Is it accessible and friendly?

There are no accessible toilets in this pub.