

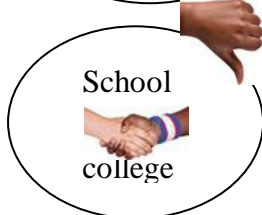
Strategic Transition to Adulthood Group (STAG) south east



Newsletter No. 5 – September 2010



national transition support team
working together to improve transition
for disabled young people



Welcome to the fifth STAG Newsletter.

We hope that this newsletter will keep you up to date with some of the things that are happening in transition from school to adult life for young people with learning disabilities and/or difficulties.

There is now a new Government and many things are changing. We want to tell you about these changes in our newsletters.

Transition in the South East Region

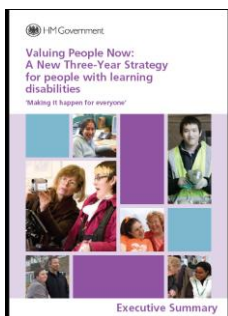
The Transition Support Programme

The Transition Support Programme is in its third and last year.

All areas know their 'development stage' which was based on the Self Assessment Questionnaires.

In the South East, transition is getting better for most young people. 18 out of 19 local areas said that person centred planning is now part of transition planning. In most areas people working on transition have been trained in person centred approaches, or will be soon.

In the South East we need to get better at joint work between schools and colleges. We also need to get better at planning for work and other opportunities when leaving college.



Each local area is now working on its Transition Development Plan.

There was extra money to help improve and keep services good. 18 local authorities bid for the money and all got some of the money to develop their work. The work includes all five areas of the Transition Support Programme:

- **Participation** of disabled young people and their families
- Effectiveness of **personalised** approaches
- **Joint assessment** processes within children's trusts and adult services
- Realistic post 16 **opportunities** for living life
- Strategic joint **partnership** working

Transition Support Programme workshops

People who went to the workshops about the Lead Professional/Key Worker for Young People in Transition and the Virtual Transition Team said they were very good.

There are more workshops planned for the year. More information about the workshops will be sent to local authorities.

If you would like more information about the work of the SEN Regional Hub please go to:

www3.hants.gov.uk/sen-hub

Valuing People Now Workshops

The Valuing People Now team has run workshops about transition. These have covered:

- Person centred planning
- Planning for good health
- Planning for jobs
- Friends and relationships
- Transition, Personalisation and Support Planning.

Forum



The next forum meeting is on 4 October 2010

Local Area Transition Leads

There is a list of local area transition leads that your Learning Disability Partnership Board has.

Action for Inclusion



Action for Inclusion is trying to improve opportunities in Further Education for all young people. It is made up of Further Education colleges, School 6th Forms and special education providers in the South East.



The work of Action for Inclusion will be celebrated on 8th October 2010. At this event best practice will be shared..



To book a place go to

<http://www.lsis.org.uk/Services/Events/Pages/Learn-about-inclusion-in-action-081010.aspx>

or contact Lesley Floyd – Lesley.floyd@abingdon-witney.ac.uk



Project Search in Kent

Project Search brings together, education, employment support and an employer to help young people with a learning disability develop work skills. In Kent the partners are:



Education - Thanet College



Employment support – Kent Supported Employment



Employer - East Kent Hospitals University NHS Foundation Trust.



12 young people will start the year long course in September 2010. The aim is to give the young people work skills, it is hoped that some of the students will find a job within the Trust.



The students day is split up into:

- Classroom time
- Placement/work time
- Classroom time



There will be three 10 week placements in different areas of the hospital. These include:

- Clinical areas such as the Wards
- Office areas,
- Others such as catering.



There 15 possible placements within the Trust.

For more information please contact Daniel Marsden on Daniel.marsden@ekht.nhs.uk or on mobile **07786 171008**.

National developments

Planning and Funding Further Education for Learners with Learning Disabilities and/or difficulties



In July, the Secretary of State Michael Gove, changed the way planning and funding would happen.

The Young People's Learning Agency is now responsible for this.



Local authorities are responsible for strategic planning (the big plans).

Learning Difficulty Assessments.

The Government guidance that we talked about in the last newsletter was replaced in March. The new guidance is called "Supporting young people with learning difficulties to participate and progress – incorporating guidance on Learning Difficulty Assessments."



It remains the responsibility of the Local authorities to make sure the assessments happen.



The guidance suggests that a set of principles to underpin all assessments.

All the information about the funding of further education is at:

<http://publications.dcsf.gov.uk/eOrderingDownload/DCSF-01111-2009.pdf>.

The Learning for Living and Work Framework



The Guidance says that one way for recording the Learning Difficulty Assessment is the Learning for Living and Work Framework. This is currently used in some parts of the country, usually for learners with more complex needs who require additional support in further education.

The Framework is being updated to provide one document that can be used as a transition plan from Year 9.



If you want to know more about the Framework, please contact michael.dalton@ypla.gov.uk.

Developing Government Policy



The Children's Minister Sarah Teather said there will be a 'Green Paper' in the autumn to look at the needs of children and young people with special educational needs and disabilities (SEND). She said that the most vulnerable children should get the best quality of support and care, and have the same opportunities as all other children making the system more family friendly.

Resources

The National Transition Support Team's website for the Transition Support Programme has lots of news and information, find this at

www.transitionsupportprogramme.org.uk.





The work of Strategic Transition to Adulthood Group (STAG)

If you want to discuss anything about transitions or want to share good practice, please contact a member of the STAG through the website or contact Hilary on **0207 972 4036**

These will be on the SEN Regional Hub website - www3.hants.gov.uk/sen-hub

Thank you for reading.

Thanks to



for the pictures