

# Disability Hate Incident Database Report

## March 2009 to March 2010 Annual Report

### Partnership Community Safety Team

162 North Street,  
Brighton.  
BN1 1EA

Nahida Shaikh

Tel: (01273) 29 0584  
Email: [Nahida.Shaikh@brighton-hove.gov.uk](mailto:Nahida.Shaikh@brighton-hove.gov.uk)

### Team

**Hate Incident Caseworker**  
Tamsin Otto

Tel: (01273) 29 6777  
Email: [tamsin.otto@brighton-hove.gov.uk](mailto:tamsin.otto@brighton-hove.gov.uk)

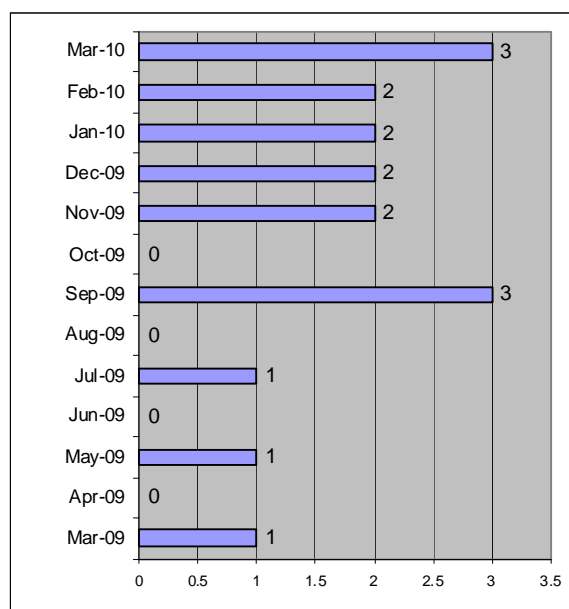
**Hate Incident Caseworker**  
Gabriel Saclain

Tel: (01273) 29 4637  
Email: [Gabriel.Saclain@brighton-hove.gov.uk](mailto:Gabriel.Saclain@brighton-hove.gov.uk)

## The Disability Hate Incident Database Report

### Monthly Referrals / Disability Hate Incidents

Mar-09	1
Apr-09	0
May-09	1
Jun-09	0
Jul-09	1
Aug-09	0
Sep-09	3
Oct-09	0
Nov-09	2
Dec-09	2
Jan-10	2
Feb-10	2
Mar-10	3
<b>Total</b>	<b>17</b>

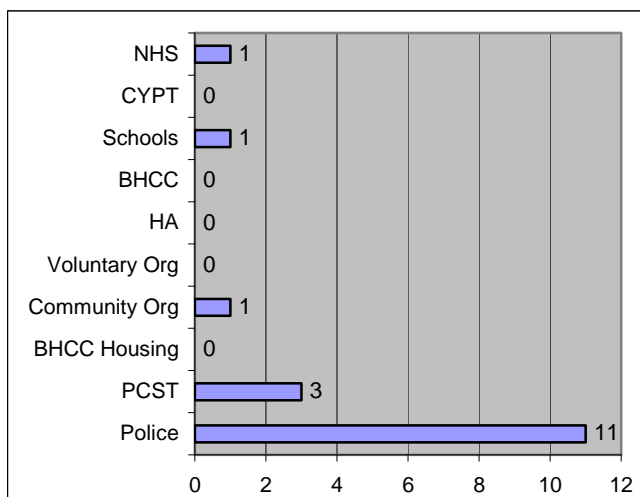


In the thirteen months period from March 2009 to March 2010, 17 disability hate incidents were recorded on the central database. Four of which were recorded against a single (repeat) victim, this case involved several agencies working together to support the victim. Local consultation with disabled people and organisations supporting them, points to significant under-reporting of disability hate incidents in the city, hence these trends need to be read as notional / as a guide.

We attempted to obtain historical data on disability hate incidents from a number of organisations and found that four further incidents were reported to Brighton & Hove Federation for Disabled People from May 2009 to February 2010. Additionally, some incidents mainly discrimination and complaints have been reported to the INTERACT – advocating on behalf of the people with Learning disabilities. Very few discriminatory abuses were recorded on the Safeguarding Adult alerts. The exercise raised issues around recognising /identifying disability hate incidents and recording practices of statutory and voluntary sector organisations. We continue to work with the police and other agencies to improve recording and reporting of hate incidents.

## Sources of Referral

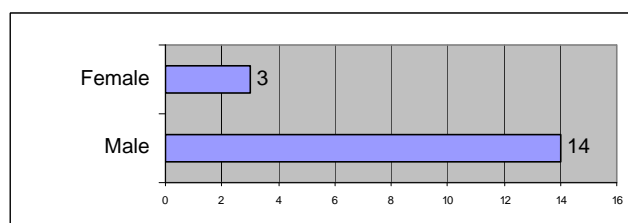
Police	11
PCST	3
BHCC Housing	0
Community Org	1
Voluntary Org	0
HA	0
BHCC	0
Schools	1
CYPT	0
NHS	1
<b>Total</b>	<b>17</b>



Police are the largest source of reports (65%) as is the case in other forms of hate incidents. The Healthy Schools Team separately monitors levels of bullying and harassment in schools and reports to the CYPT.

## Disability Hate Incidents by the Victim's Gender

Male	14
Female	3
<b>Total</b>	<b>17</b>

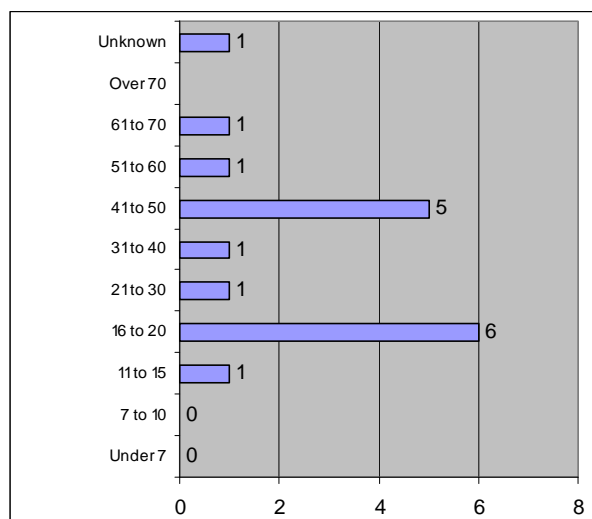


The gender split between male and female victims of reported disability hate incidents is 82% and 18% respectively. Our consultation informs us that men and women experience incidents differently / in a gendered manner. We need to improve reporting from women.

## Disability Hate Incidents by the Victim's Age

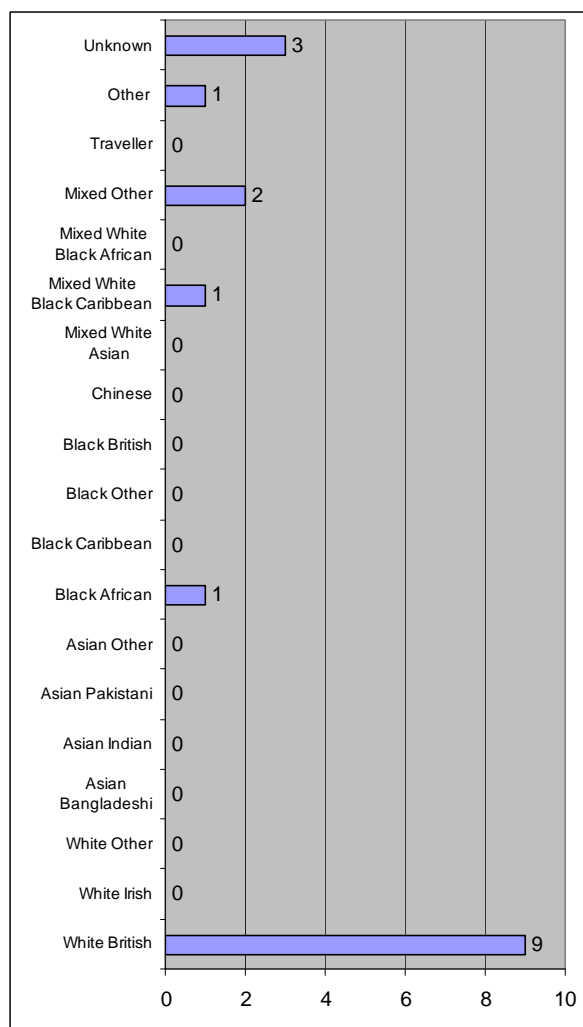
The highest numbers of reported incidents (in 94% cases where age is known) were directed at the age group 16 to 20 followed by the 41 to 50 age groups.

Under 7	0
7 to 10	0
11 to 15	1
16 to 20	6
21 to 30	1
31 to 40	1
41 to 50	5
51 to 60	1
61 to 70	1
Over 70	0
Unknown	1
<b>Total</b>	<b>17</b>



### Disability Hate Incidents by the Ethnicity of the Victim

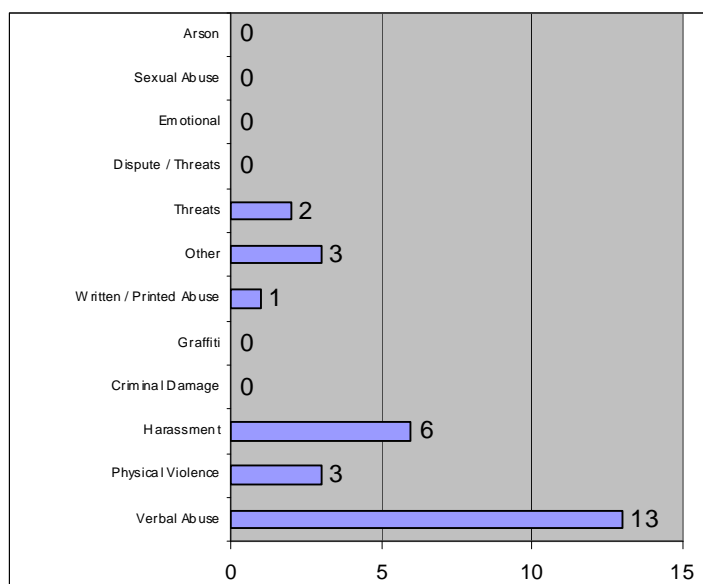
<b>White British</b>	9
<b>White Irish</b>	0
<b>White Other</b>	0
Asian Bangladeshi	0
Asian Indian	0
Asian Pakistani	0
Asian Other	0
<b>Black African</b>	<b>1</b>
<b>Black Caribbean</b>	<b>0</b>
<b>Black Other</b>	<b>0</b>
<b>Black British</b>	<b>0</b>
Chinese	0
<b>Mixed White Asian</b>	0
<b>Mixed White Black Caribbean</b>	1
<b>Mixed White Black African</b>	0
<b>Mixed Other</b>	2
Traveller	0
<b>Other</b>	1
Unknown	3



9 of the 14 victims where ethnicity was recorded were White British.

## Distribution of Disability Hate Incident by the Category of Incident

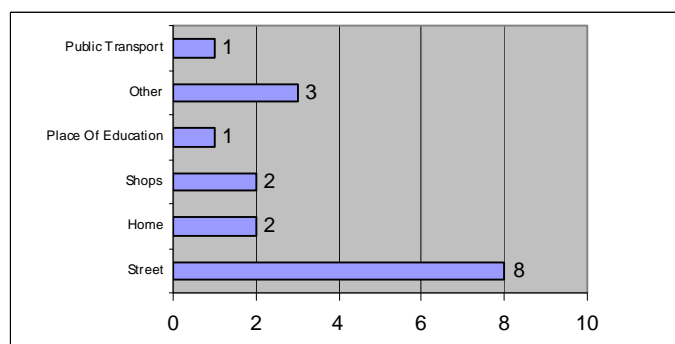
Verbal Abuse	13
Physical Violence	3
Harassment	6
Criminal Damage	0
Graffiti	0
Written / Printed Abuse	1
Other	3
Threats	2
Dispute / Threats	0
Emotional	0
Sexual Abuse	0
Arson	0
<b>Total</b>	<b>28</b>



Verbal abuse is the highest reported category of incidents. Generally other forms of abuse accompanied verbal abuse. Of the 4 incidents reported to the Brighton & Hove Federation of Disabled People, 3 were cases of discrimination, and one was possible criminal damage.

## Distribution of Disability Hate Incidents by the Type of Location

Street	8
Home	2
Shops	2
Place Of Education	1
Public Transport	1
Other	3



8 incidents occurred on the street, 2 occurred in a home, 2 in a shop and 1 in public transport. 'Other' location types included 2 incidents in a youth club and 1 over the internet.

### **Distribution of Disability Hate Incidents by the Type of Disability**

Learning disabilities	5
Physical disabilities	4
More than one type of disability	5
Long term neurological condition	1
Not specified	2

Of the 17 cases reported to us, 5 were about incidents against people with a Learning disability. Learning disability also featured in all the 5 cases recording more than one type of disabilities. Four cases involving complex needs included Physical disabilities, Learning disabilities and Mental Health issues and the fifth cases included Learning disability and mental health issues. None of the cases recorded disability hate incidents for mental health issues alone. In two cases type of disability was not specified on the form.

All the victims were offered casework support and in one case of repeat victimisation we also held a multi-agency casework Panel to co-ordinate the response to the incidents and to increase the victim's safety.

Your comments on this report could be directed to Nahida Shaikh – Community Safety Manager on the address stated at the front page of this report.

If you would analyse the trends differently or with nuances, I would certainly like to hear and benefit from your wisdom.

Thank you

Nahida Shaikh