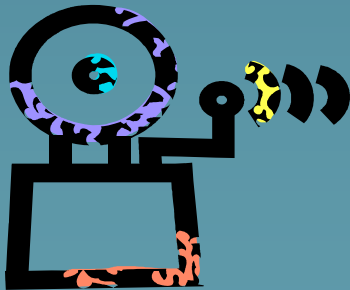


Sheltered Housing

Shaun Thurston
Sheltered Housing Assessment
Co-ordinator



What is Sheltered Housing?



- ◆ Mainly for older people
- ◆ People under 60 will now be considered
- ◆ Independent living
- ◆ Scheme Manager on site
- ◆ Support Plan
- ◆ Carelink Alarm System

How do I apply for Sheltered Housing?



- ◆ Complete a Joint Housing Register form

- ◆ With Medical & Mobility Forms (if needed)

- ◆ Complete a Support Needs Self Assessment Form

A form titled "MEDICAL CENTER" with fields for NAME, ADDRESS, AGE, and DATE. It features a large "R" symbol and a signature line. At the bottom, it includes a checkbox for "LABEL" and a row of checkboxes numbered 0 to 5, followed by "PRN" and "NR".

MEDICAL CENTER

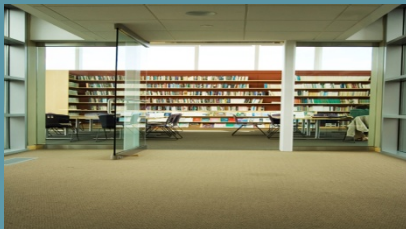
NAME _____ AGE _____
ADDRESS _____ DATE _____

R

SIGNATURE

LABEL
REFILL 0 1 2 3 4 5 PRN NR

What happens once I am on the Housing Register?



- ◆ Will be able to bid for Sheltered properties
- ◆ All Sheltered Properties advertised in the Homemove magazine
- ◆ Available at Libraries & Housing Offices

Contact Details

- ◆ Shaun Thurston - Sheltered Housing Assessment Co-ordinator
 - ◆ Tel: 01273 290497
 - ◆ Email: shaun.thurston@brighton-hove.gov.uk
 - ◆ For Joint Housing Register Forms:
 - ◆ Contact Homemove: 01273 293130
- 