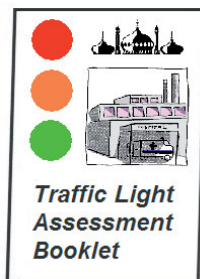


## Traffic Light Assessment

The booklet will be kept by people with a learning disability and brought into hospital at each visit for staff at the hospital to see and use. It contains all the important information needed for looking after that person.



## Hospital Resource Pack

This is a pack which contains all need to know information to support staff working in the Hospitals when caring for someone with a Learning Disability.

## The Learning Disability Liaison Team

The Liaison Team work across all sites within the Brighton and Sussex University Hospitals including;

- The Royal Sussex County Hospital
- The Sussex Eye Hospital
- The Princess Royal Hospital
- The Hove Poly Clinic Department

## The Learning Disability Liaison Team

Office hours Monday – Friday

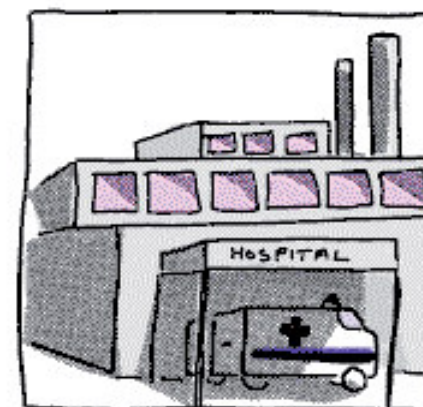
8.30 – 4.30

Phone: 01273 696955 Ext 4975

Bleep 8514

Sussex Partnership   
NHS Foundation Trust

## The Learning Disability Liaison Team



## What do we do?

We help people with a Learning Disability and their family or carers to get good health care from our local hospitals during many types of hospital visits. We can provide support for planned and emergency admissions, outpatient appointments and support with safe and appropriate discharge.

We work with all different staff in our hospitals to understand the needs of people with learning disabilities and provide specialist nursing guidance and advice on an individual needs led basis.

We help people with a learning disability and staff at the hospital to make sure the right decisions are being made together to ensure that all decisions are person centred.

We also raise the profile of the support available through our community teams and specialist services.

We hold a small community caseload of people with learning disabilities and complex health needs.



## What tools do we use?

### **The Hospital Communication Book**

Each ward in the hospital will be given one of these to use with people who have a learning disability. This book contains useful information about why people may have difficulties in understanding or communicating and has useful tips, pictures/signs/symbols which can be used to improve communication

