

The Learning Disability Liaison Team

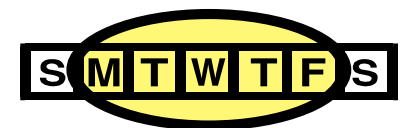
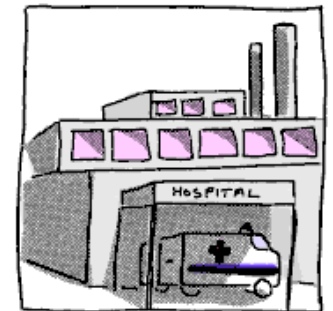
Lin Moore

Helen Lambert

Alice Ellis

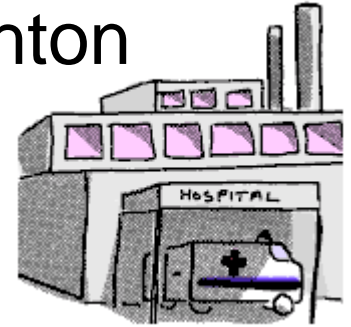
The Learning Disability Liaison Team

- The service started on 5th January 2009
- We are a small team of three experienced learning disability nurses
- Our office is in Southpoint Building at The Royal Sussex County Hospital
- We work between 8.30 and 4.30, Monday to Friday



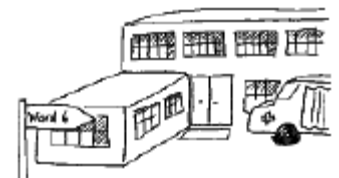
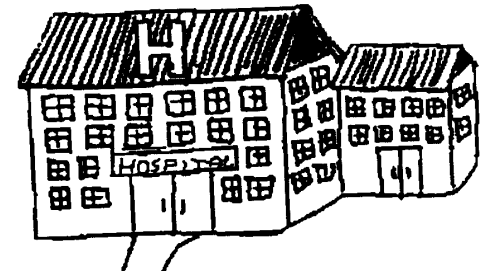
Our area of work

- The Liaison Team work across the Brighton and Sussex University Hospitals



- This means we work in:

- The Royal Sussex County Hospital in Brighton
- The Princess Royal Hospital in Haywards Heath
- Hove Polyclinic Outpatients Department in Hove
- Sussex Eye Hospital

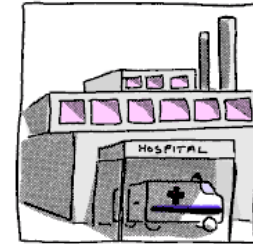


The background...

- **Death by Indifference – Mencap 2007**
 - Reported about 6 people with a learning disability who had died – Mencap said this was because the NHS did not give proper care and treatment
- **Healthcare for All**
 - Followed Mencap report, made 10 recommendations regarding how health care can be improved
 - This centred around 'Core Standards for Better Health' and includes improving GP care and hospital services as well as ensuring people with learning disabilities are included in plans for new or changing services
- **Valuing People Now 2009**
 - This was the review of the original Valuing People document, and considered both of the above reports
 - It clearly outlined areas of excellence and set further aims for achievement by services

What do we do?

- We help people with a learning disability to get good health care from our local hospitals



- We actively support the patient with a learning disability and their carers/family members when they are in hospital during many types of hospital visits.



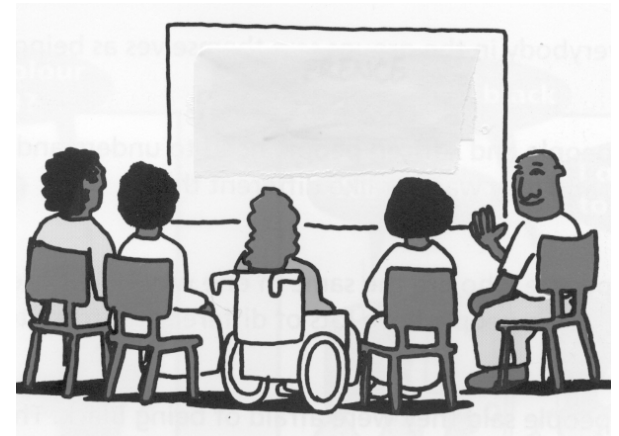
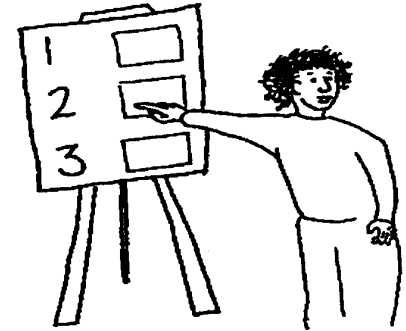
What do we do?

- We work with staff in our hospitals to understand the needs of people with a learning disability
- This includes doctors, nurses, receptionists, staff in accident and emergency and lots of other professionals



What do we do?

- We also train nurses and doctors who are still learning at university to understand the needs of people with a learning disability



What do we do?

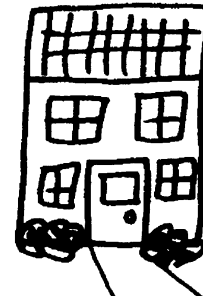
- We work with people with a learning disability and staff in the hospital to make sure the right decisions are being made together



- We help build closer relationships between the hospital and community learning disability services

What do we do?

- We also work with a small number of people with a learning disability who have a very complicated illness outside of hospital, in their own home. If they live in Brighton and Hove



Two books to help

- The Hospital Communication Book
 - Each ward in the hospital has been given one of these to use with people who have a learning disability
- The Hospital Passport
 - This is a booklet completed by people with a learning disability, and/or their family or carers
 - The booklet will be kept by people with a learning disability and brought into hospital at each visit, for staff at the hospital to see and use



Contact the Learning Disability Acute Liaison Nurses for support - see back page for details

My Hospital Passport

Place photo here (optional)

My name is:

I like to be known as:

Type of home I live in:
E.g. supported living, family home

Hours of staff support I get each day:

Who to contact for more information about me:

If I go to hospital this book needs to go with me.
It gives hospital staff important information about me. This book should be kept at the end of my bed, with my notes, and used when you talk to me.

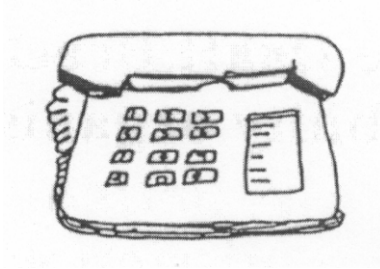
This is essential reading for all hospital staff working with me

Things you must know about me

Things that are important to me

My likes and dislikes

Please return my passport to me when I am discharged



Contacting us

**Alice Ellis
Lin Moore
Helen Lambert**

ldlt@sussexpartnership.nhs.uk

Direct Line – 01273 664975