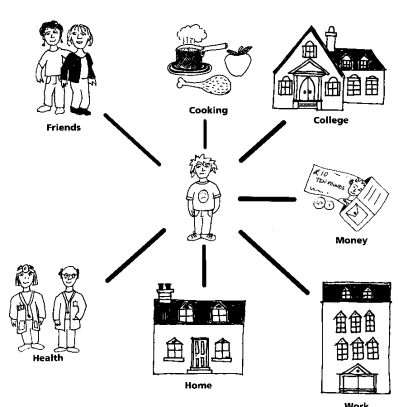


# Reviews Update for The Partnership Board October 2010.



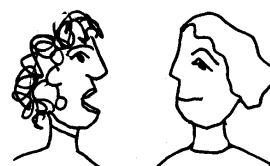
## What is a review?

A review is a meeting.



At the review you can talk about what is happening in your life, for example at home, college, job or day service.

Reviews are done by the Care Management Team which is part of the Community Learning Disability

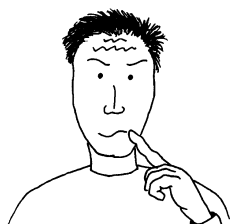


Team. The team has social workers and care managers who do the work.

## **What is a review for?**

A review helps us to learn about what you want.

We want to make sure you are happy and that the support you get helps you live your life as independently as possible, whilst remaining as safe as possible.



If you have problems you can talk to people at the review. You can tell us if things have changed.

Your family, friends or people who work with you may also be at the review. They might talk about what is happening in your life too.



## **Why do we need to have a review?**

It is important that you tell us about your life and what you need to help you.

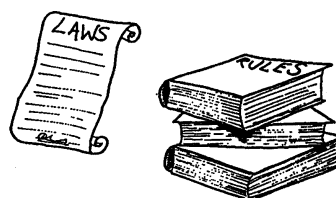


You can tell us if family, friends and services help you or if you are unhappy with the support you get.

If things change we want you to tell us, we can then make sure we help you in the right way.

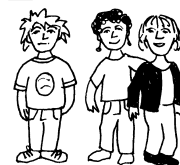
We also use the information we get from reviews to help us develop services for people with learning disabilities in the city; services they want!

The Government ask us to make sure that a review is held for everyone who has a service from the Community Learning Disability Team in Brighton & Hove.



## **Who can be involved in your review?**

You can invite anyone that you think should come to your review.



We might ask you if it is ok to invite other people that we think might help. If you do not want someone at your review, we will not invite them.

We may ask you if it's ok to get some information from someone who is not coming.



## How can reviews help?

Reviews help to make sure your support works well for you.



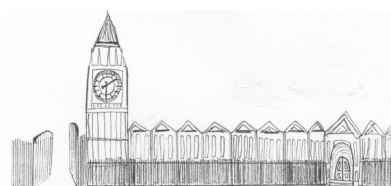
Reviews are a chance for us to talk to you about how your support works,



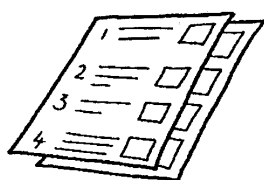
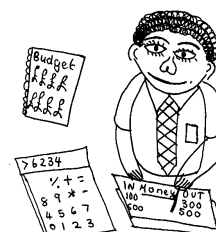
Reviews are a chance for us to make changes to your support if that's what you want.

## Performance Indicators?

Performance Indicators are the way the Government makes sure that we are doing our jobs well.



They are a way of counting how much work we do and if it's the kind of work the Government wants us to do.



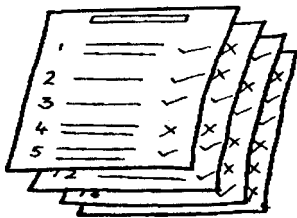
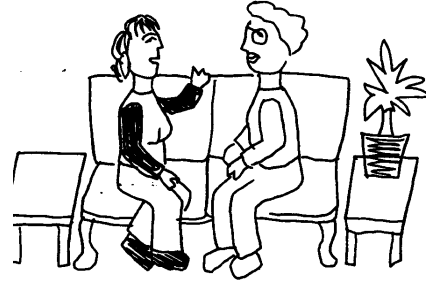
It is a way of making sure we meet the standards that the Government sets.

Performance Indicators can affect the way that a council spends its money and how much money it can spend.



## How many reviews do we do?

We have 4 workers who carry out the reviews for the Community Learning Disability Team. But all Social Workers and Care Managers do reviews when they have helped people get a service.



Each year we have **more** people to review because people are living longer, and there are more young people who are becoming adults and need our support.

So far this year, we have reviewed **40%** of people who receive a service from us, and we plan to review up to **80%** of people who receive a service by the end of **March 2011**.

Cameron Brown  
Service Manager  
Community Learning Disability Team  
October 2010

