



Report

2009 2010

Community Learning Disability Service

Brighton & Hove Learning Disability Partnership Board
www.brightpart.org

Safeguarding Adults Report 2009/2010 from the Social Work & Care Management Team to the Learning Disability Partnership Board

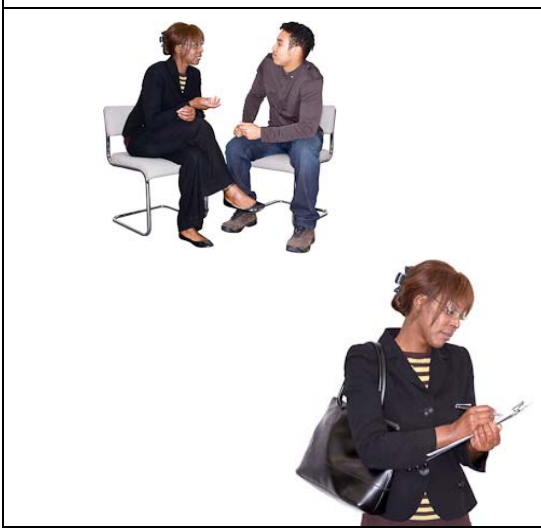


This report is about what has happened with keeping people safe ("Safeguarding") from April 2009 to April 2010 in the Community Learning Disability Social Work & Care Management Team.

1. Alerts



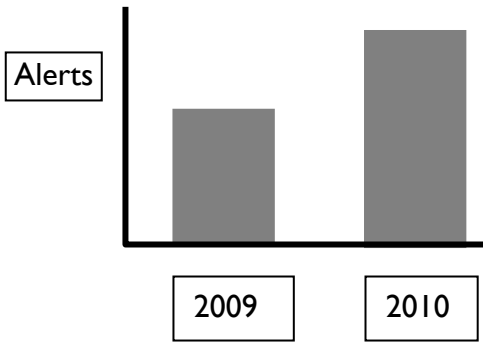
Alerts are when the Care Management Team are told when some one with a learning disability has come to harm – or might have come to harm.



We can investigate and try to help stop harm happening.



From April 2009 to April 2010 we had **284 safeguarding alerts**.



Last year we had **194 alerts**. That means there are more alerts this year.

2. Types Of Abuse



One single alert can be about lots of different types of abuse.



The biggest type of abuse we have investigated is physical abuse, when someone may have been hit, punched, pushed, or pulled.

We have investigated physical abuse **158** times.



We have investigated Psychological abuse **58** times.



We have investigated Financial/material abuse **35** times.



We have investigated Sexual abuse **45** times.



We have investigated Neglect **28** times.



We have investigated Discriminatory abuse **6** times.



We have investigated Institutional Abuse, where more than one person is affected, **3** times.

3. Response Levels:

There are **4** levels of response investigation



Day Centre

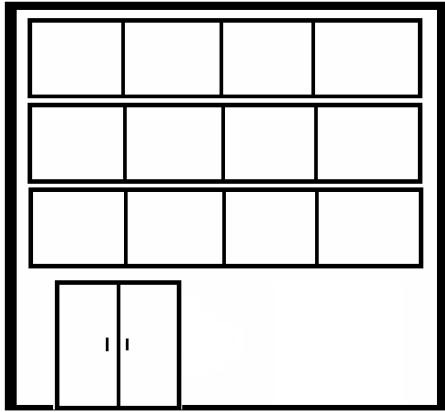


Our House

Level 1 might be used if for example someone with a learning disability is pushed by another person at their service but it hasn't happened before and does not cause a lot of harm or distress.

The manager of the service provider would probably investigate this and send us a report.

There were **106** Level 1 investigations.



Community Learning Disability Service

Level 2 might be when this incident has happened before; Social Work & Care Management Team would investigate and may look at the person's service package to see if it is still right for them.

There were **33** Level 2 investigations.



Level 3 might be if the person was badly hurt or that the person who harmed them was a member of staff - Social Work & Care Management Team and the Police may investigate.

There were **45** Level 3 Investigations



Level 4 is like 3 but when a lot of people may have been harmed, by either one person or perhaps because of the way a service provider treats people.

There was **1** Level 4 investigation.



4. Where Abuse Happens

Each time we get Alert, we keep a list of where the abuse might have happened.

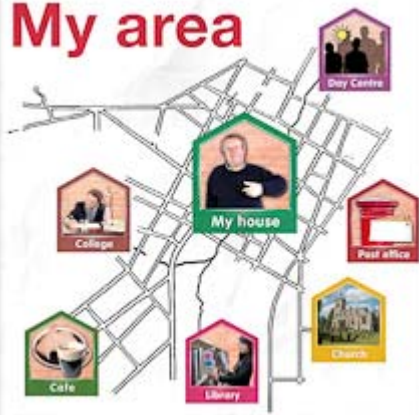
1. _____
2. _____
3. _____

This is the list for 2009/10:



We had **81** alerts where the abuse reported took place in a Residential Service.

My area



In the Community (unsupported) - **48** alerts. This means that a service provider was not involved.



We had **35** alerts where the abuse took place in Day Services



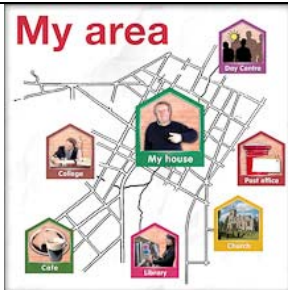
We had **29** alerts where abuse took place in a Supported Living Service.



Clients Own Home - 24 alerts



School/College - 21 alerts



In the Community (supported) - 18 alerts



Others (hospitals, social clubs, hostels) - 14 alerts





Adult Placement - 6 alerts



Respite Service - 4 alerts



In transport - 4 alerts

5. What happened - this is called the "outcome"



From our investigations there were **79** times when we thought that abuse probably happened - this is called "**substantiated**".



There were **29** times when we thought abuse didn't happen- this is "**unsubstantiated**".



There were **29** times when we couldn't decide whether or not abuse had happened - this is "**inconclusive**".



There were **99** alerts were checked by us but did not need to be investigated as the problems raised in the alerts were not safeguarding issues.



There are **48** investigations from since April 2010 that we are still working on - we will decide the outcomes soon.

	<p>The Community Learning Disability Team will do more Safeguarding Investigations.</p> <p>At the end of an Investigation we make sure there is a 'Protection Plan' in place to try to make sure that people with learning disabilities say safer.</p>
	<p>We think that people are more aware of Safeguarding and who to talk to if they need help.</p>
	<p>This means we are hopefully keeping more adults with a learning disability safe.</p>

Gerrard Martin
 Operations Manager
 Social Work & Care Management
 Community Learning Disability Team